

INCOME INEQUALITY IS NOT DECREASING

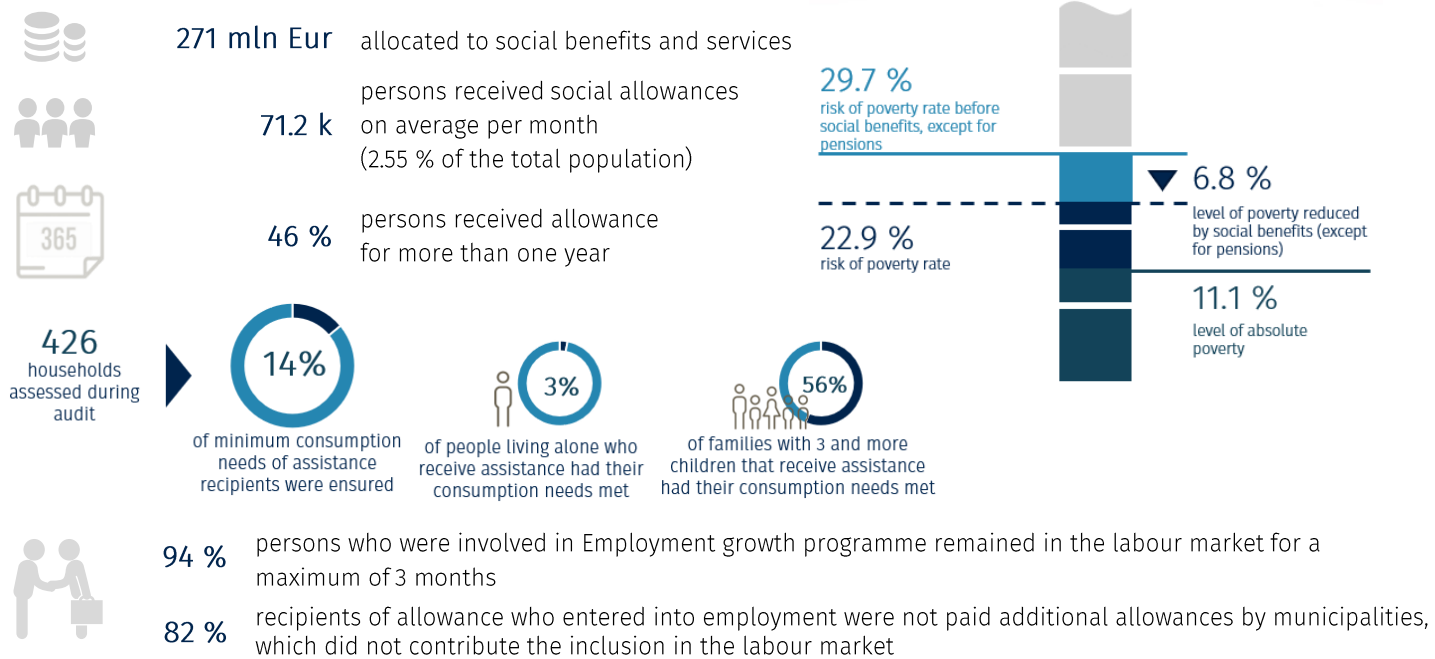
7.1-fold difference between the highest and lowest earners

31 % effects of social benefits on reduction of inequality in Lithuania (EU average is 40.4 %)

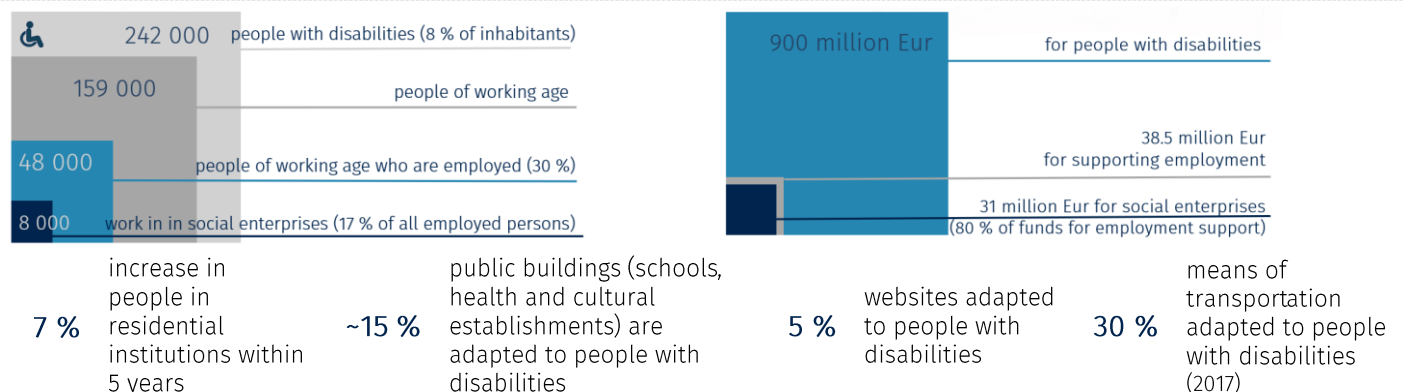
8.7 % effects of taxes on reduction of inequality in Lithuania (EU average is 11.7 %)

SOCIAL ASSISTANCE DOES NOT ENSURE MINIMUM CONSUMPTION NEEDS

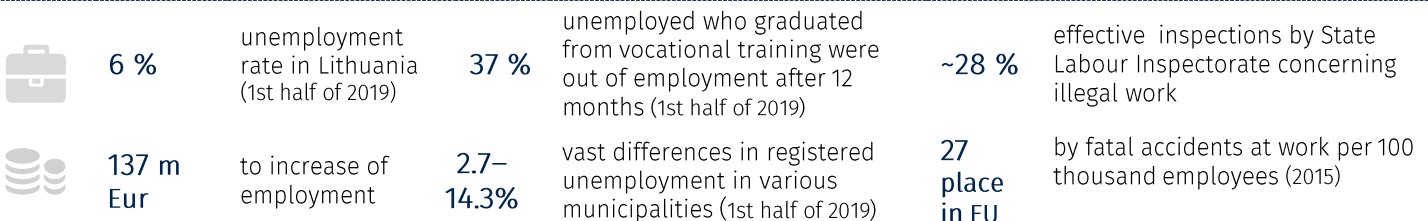
Not all forms of assistance granted to a person or a family (financial assistance, services, exemptions) and effectiveness of their entirety are assessed



PEOPLE WITH DISABILITIES ARE INSUFFICIENTLY INTEGRATED INTO LABOUR MARKET AND THE SOCIETY



LACK OF SKILLED WORKFORCE, SUPERVISION OF SECURE AND LEGAL WORK TO BE IMPROVED



* Where the year is not indicated, data from 2018 is given